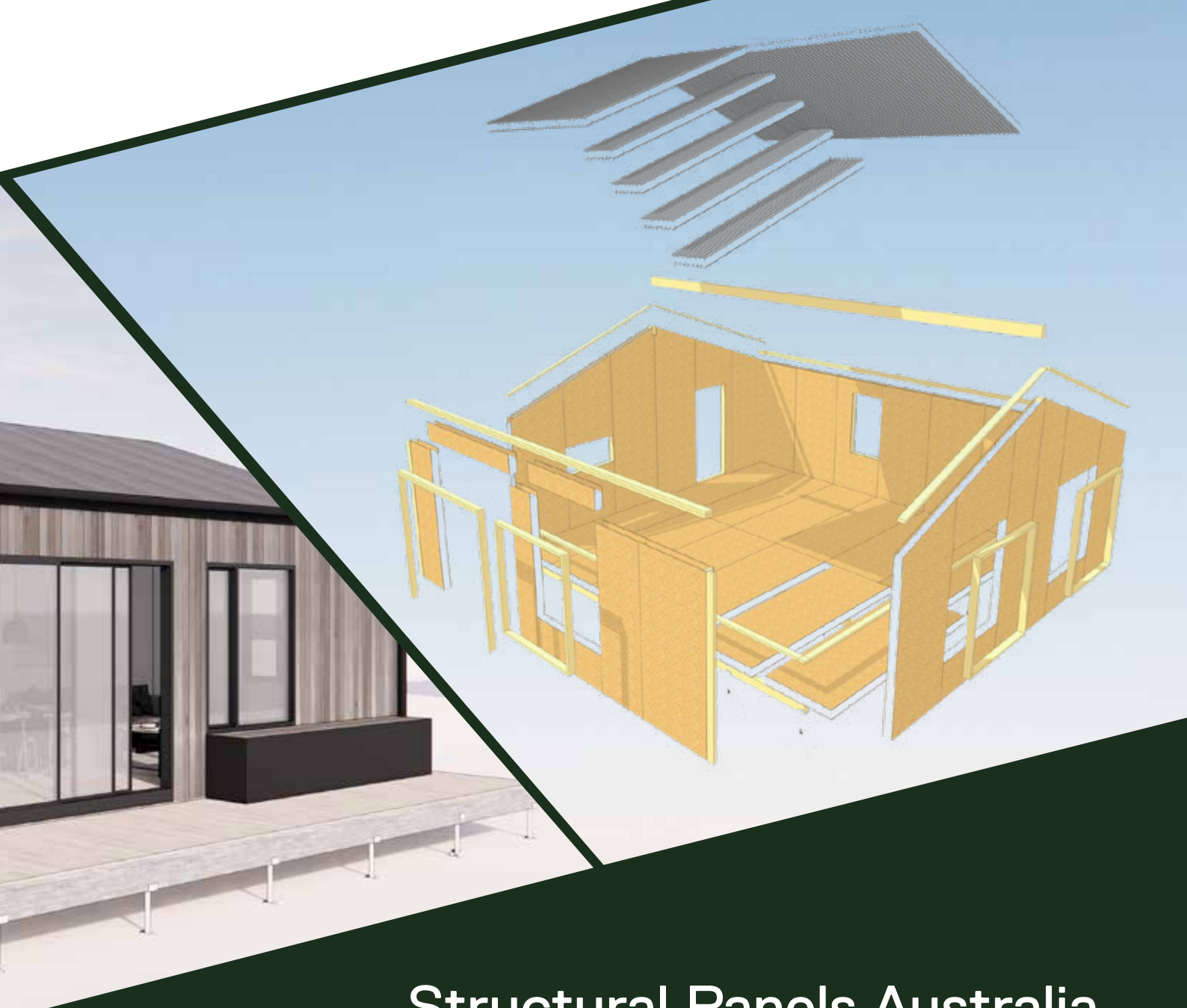




**STRUCTURAL
PANELS
AUSTRALIA**

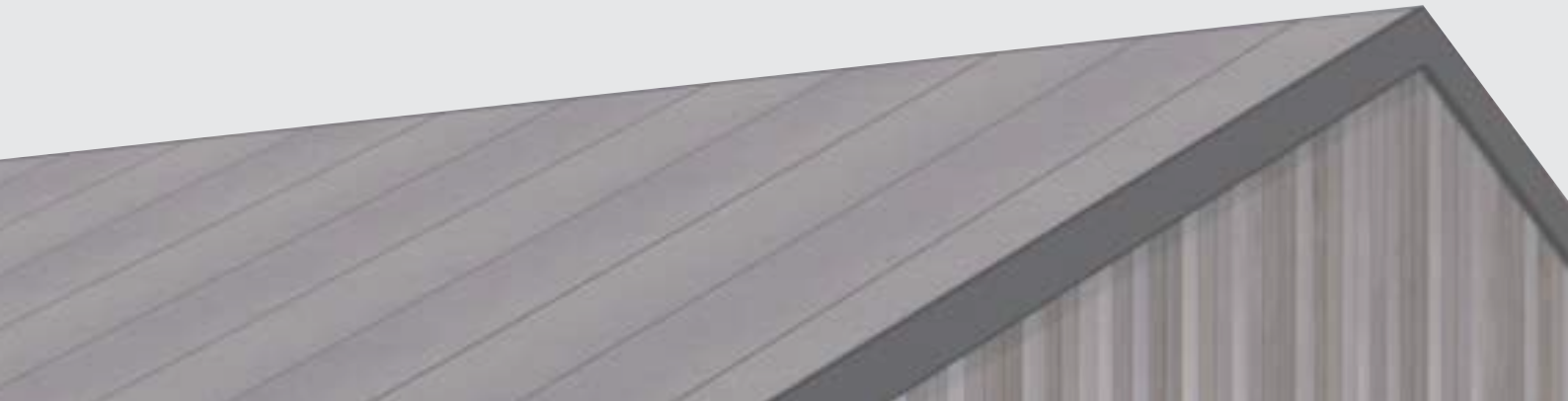


Structural Panels Australia SPA KIT

Factory 52b Mink Street, Daylesford 3460
1300 301 885
enquiries@structuralpanels.com.au

CONTENTS

What is the SPA Kit?	3
What creates the SPA Kit?	5
The STUDIO Kit (37.5 m2)	7
The COMPACT Kit (56 m2)	10
The MEDIUM Kit (75 m2)	13
The LARGE Kit (101 m2)	16
What is in a SPA Kit?	20
Little Things Design Stages and Fee	21



What is the SPA KIT?

Structural Panels Australia's SPA KIT is a unique building system utilising SPA and Tridek SIPs (structurally insulated panels), manufactured in our factory in Daylesford, Victoria and shipped to all parts of Australia.

Structural Panels Australia's SPA KIT comprises the external building envelope, floor platform if not on a concrete slab, external walls and roof. SPA SIPs can also be supplied for internal partition walls, or these can be framed on site in traditional stick frame.

Structural Panels Australia's SPA SIPs for floors and walls are structural OSB (oriented strand board) sandwich panels with a rigid insulation core that replaces most bearers, joists, studs and lintels etc.

Structural Panels Australia's Tridek SIPs for roofs and ceilings are structural roofing steel sandwich panels with a rigid insulation core that replaces all traditional structural roofing structures such as trusses, rafters, purlins and battens etc.

SIPs, or Structural Insulated Panels replaces most standard structural building elements with insulated panels that are very quick and easy to assemble and have excellent thermal properties.

Structural Panels Australia's SPA KITs are suitable for both concrete slabs and suspended floor systems.

SPA SIPs join with either box or timber splines while Tridek SIPs join by roofing steel overlaps as in traditional roofing.

SPA KITs are delivered flat packed to site with all SPA and Tridek SIPs cut to size and shape

with all door and window openings cut outs. All required timber and splines, special SIPs screws, expandable foam etc. are delivered marked and ready for installation.

Structural Panels Australia recommends replacing digging holes and concrete with Mega Anchor suspended floor system due to their advanced and adjustable footing system www.mega-anchor.com.au

Structural Panels Australia's SPA KITs are usually assembled in a few days by 2-3 people and lock-up is often reached in a week.

Structural Panels Australia SPA KITs are presented with suggested layout, floorplans and elevations already prepared. The layouts optimizes the use of SIP modules for floor, external walls and roof and gives a good sense of what's achievable with the 4 different sizes.

The process is simple. Choose one of the four SPA kit sizes and work together with the Architect Team to refine your design. The Architect Team will then prepare building permit documentation for your Building Surveyor and Builder.

We begin manufacturing the SPA KIT once your building permit has been issued.

Leadtime from when a building permit is issued till delivery is typically around 4-6 weeks. This means Lock-Up is potentially possible 5-7 weeks after your building permit has been issued.

AN EFFICIENT SOLUTION

The SPA kits provide a simple and efficient solution to building design. The individual OSB panels which make up the SPA Kits have integral strength and thermal insulative properties resulting in column free internal areas and a thermally insulated envelope.

COST EFFECTIVE

The SPA Kits are an efficient and therefore cost effective solution due to the fact that they are prefabricated offsite, utilised standard panels sizes, integrate engineering and require minimal on site time.

FAST CONSTRUCTION

SPA Kits are prefabricated offsite, meaning the time taken for assembly of a kit is a fraction of that required for a typical new build. The average time for a kit assembly is 2-3 days.

MINIMAL WASTE

The SPA Kits are designed using standard panel sizes thereby reducing material wastage and as the SPA KITs are factory manufactured the waste is easily managed. The rigid foam waste is returned to the foam manufacturer and is 100% recycled/reused. All steel waste is 100% recycled. OSB waste is turned into landscape mulch or used by local artists as canvases.

ADAPTABLE SPACES

Due to the large spans resulting in column free internal spaces, the SPA Kits are adaptable into the future as life circumstances change and internal spaces need re-designing or re-shaping.

MADE AND DESIGNED IN AUSTRALIA

SPA Kits are made and designed in Daylesford, Victoria, Australia.



Who creates the SPA Kits?

The SPA Kits are a collaboration between Structural Panels (SPA) and Little Things architecture. SPA Panels manufactures and supplies the Kit envelopes, while Little Things designs the internal layout, finishes and provides necessary documentation for approvals and construction.

Who are SPA?

Structural Panels Australia (SPA) is an Australian owned company, manufacturing a complete range of Structural Insulated Panels (SIPs) since 1996. In 2020 the factory relocated to Daylesford, Victoria, where the business continues to grow and innovate.

Structural Panels Australia are committed to providing technical and sales support, drafting, logistics, problem solving, and quality-controlled manufacturing to our customers across Australia and overseas. We provide advice and products to help design and build your SIPs home or commercial building using our SPA SIPs OSB products and TRIDEK SIPs steel products.



Who are Little Things?

Little Things are an architectural company who are passionate about sustainable living and creating economic, yet beautiful spaces. We work with Living Future design principles and are certified as Passivhaus planners.

With knowledge of the SPA SIPs system and detailing, Little Things architecture designs the internal layout, finishes and window/door locations depending on your needs and site requirements.

We are able to assist with Town Planning and Building Permit applications, and quality assurance through the build process.



What is the process?

01

Choose your Kit Size

Contact Structural Panels Australia and discuss which kit option may be best for you.

02

Design

Little Things will work with you to understand your needs and the site requirements, work through internal layout options, choose finishes and prepare drawings and documentation to gain the relevant approvals.

03

Approvals

Once the design is finalised, Town Planning Approval from your local council and a Building Permit may be required prior to the Kit construction. Little Things can assist you with this process.

04

Fabrication

Structural Panels Australia will manufacture the SIPs for your SPA KIT, flat pack all components and accessories and deliver to your building site.

05

Construction

You, as Owner Builder or your Builder will now construct your SPA KIT

STUDIO KIT (37.5m²)

SPA STUDIO KIT by Structural Panels Australia and Little Things is perfect for that extra Office, Studio, Teenage space, or Guestroom, in the backyard or on a spare block.

It is suitable for being built on either stumps or concrete slab and can be assembled in 1-2 days by a team of 3 people.

Area: 37.5m²

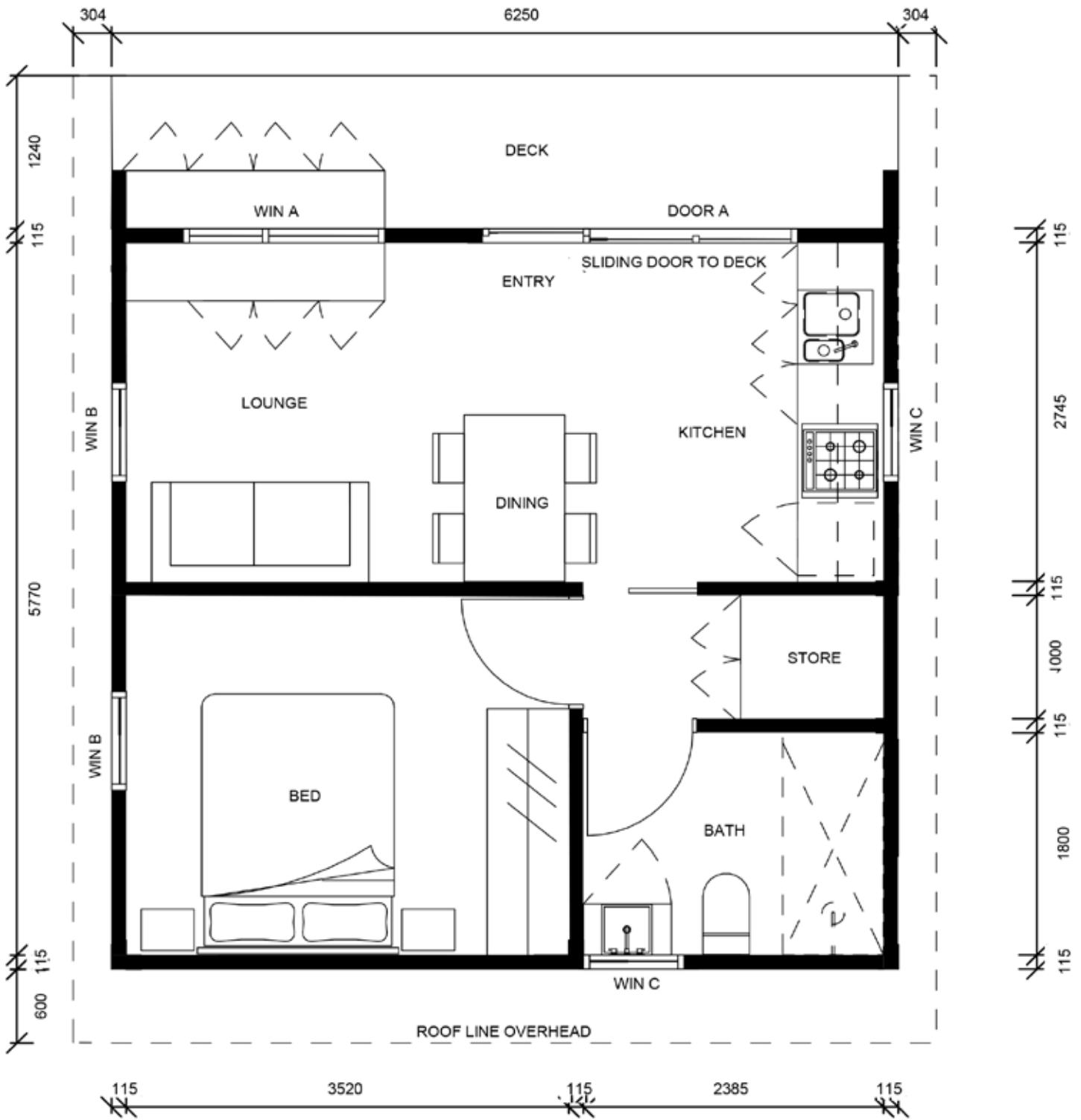
Extenal Dimensions: 6m x 6.25m²

Roof Profile Options: Gable or Skillion

STUDIO - BASE PRICE (excluding design services, internal layout and finishes)		
Studio (Walls + Roof)	Studio (Optional Floor)	TOTAL (Walls + Roof + Floor)
\$26,143.47	\$9,902.39	\$36,045.87

Structural Engineering Certification	\$2,750.00 approx
Performance Solutions Certification	\$2,269.00 approx
Art Windows - Windows + Doors (uPVC double glazed)	\$11,198.00 approx
Mega Anchor- Advanced Footing System	\$3,552.00 approx
Price information only and is not supplied as part of SPA KIT	





An example of a Studio KIT - Internal Layout
 Not to scale



An example of a Studio KIT Exterior - Gable Roof Option



An example of a Studio KIT Interior - Gable Roof Option



An example of a Studio KIT Exterior - Skillion Roof Option



An example of a Studio KIT Interior - Skillion Roof Option

COMPACT KIT (56m2)

SPA COMPACT KIT by Structural Panels Australia and Little Things is a small and well designed building perfectly suited as a 1 bedroom home for a single person or a couple. The size meets the criteria for Social Housing government funding.

It is, of course also very suitable for an extra Office, Studio, Teenage Space or Guestroom in the backyard or on a spare block.

It may be built on either stumps or concrete slab and can be assembled in 1-2 days by a team of 3 people.

Area: 56m²

External Dimensions: 7.5m x 7.5m²

Roof Profile Options: Gable or Skillion

COMPACT - BASE PRICE (excluding design services, internal layout and finishes)		
Compact (Walls + Roof)	Compact (Optional Floor)	TOTAL (Walls + Roof + Floor)
\$32,552.31	\$14,379.01	\$46,931.31

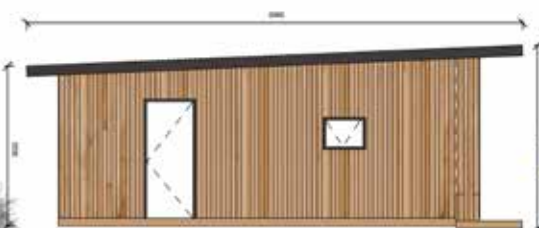
Structural Engineering Certification	\$2,750.00 approx
Performance Solutions Certification	\$2,269.00 approx
Art Windows - Windows + Doors (uPVC double glazed)	\$16,148.00 approx
Mega Anchor- Advanced Footing System	\$5,074.00 approx
Price information only and is not supplied as part of SPA KIT	



NORTH



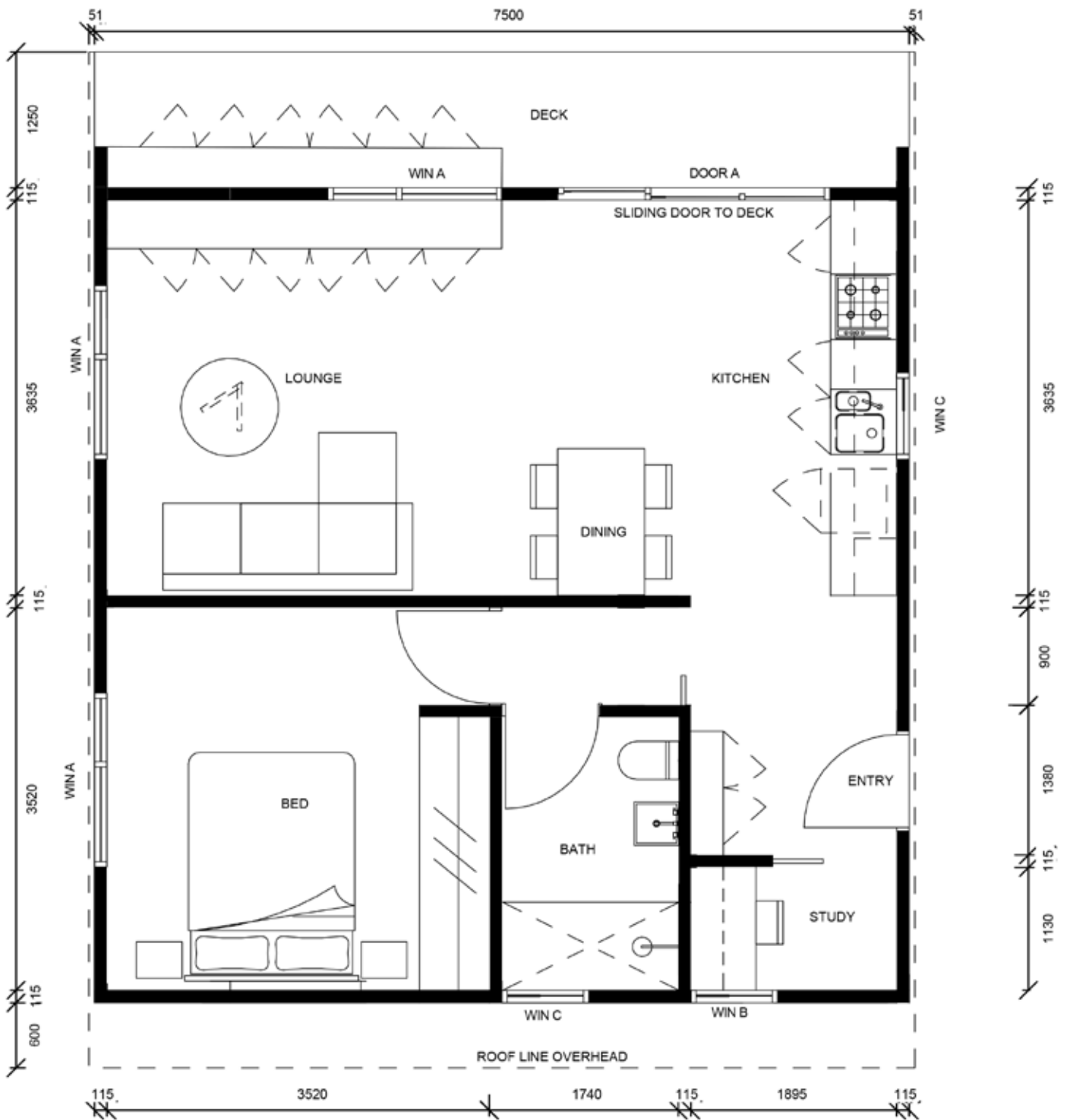
SOUTH



EAST



WEST



An example of the Compact KIT - Internal Layout
 Not to scale



An example of a Compact KIT Exterior - Gable Roof Option



An example of a Compact KIT Interior - Gable Roof Option



An example of a Compact KIT Exterior - Skillion Roof Option



An example of a Compact KIT Interior - Skillion Roof Option

MEDIUM KIT (75m2)

SPA MEDIUM KIT by Structural Panels Australia and Little Things is a well designed building perfectly suited as a 1 or 2 bedroom home for a single person, a couple or a small family.

It is of course also very suited for an extra Office, Studio, Teenage Space or Guestroom in the backyard or on the spare block.

It maybe built on either stumps or concrete slab and can be assembled in 1-2 days by a team of 3 people.

Area: 75m2

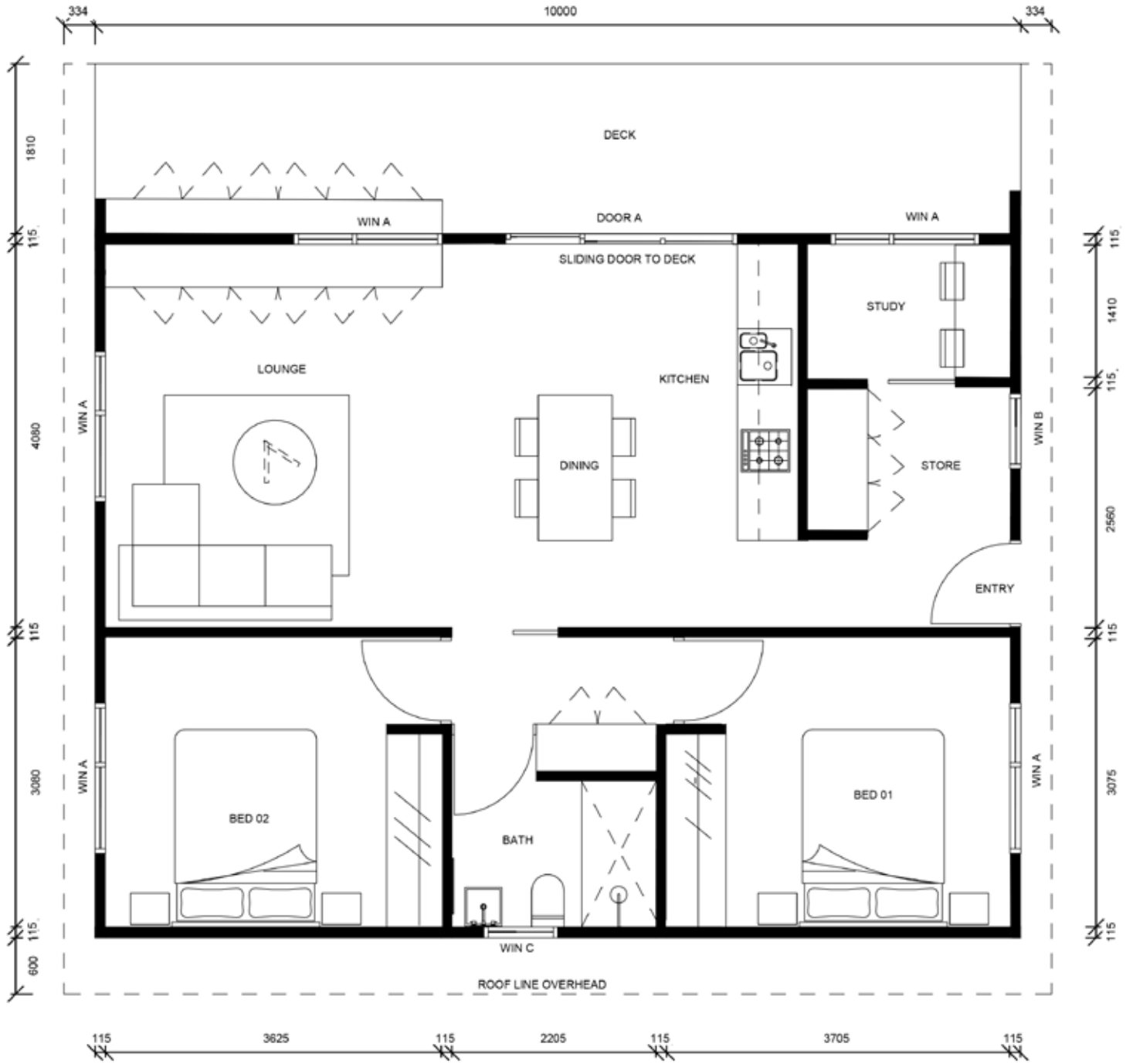
Extenal Dimensions: 7.5m x 10m2

Roof Profile Options: Gable or Skillion

MEDIUM - BASE PRICE (excluding design services, internal layout and finishes)		
Medium (Walls + Roof)	Medium (Optional Floor)	TOTAL (Walls + Roof + Floor)
\$41,867.61	\$18,929.63	\$60,797.24

Structural Engineering Certification	\$2,750.00 approx
Performance Solutions Certification	\$2,269.00 approx
Art Windows - Windows + Doors (uPVC double glazed)	\$16,544.00approx
Mega Anchor- Advanced Footing System	\$6,297.00 approx
Price information only and is not supplied as part of SPA KIT	





An example of the Medium KIT - Internal Layout
Not to scale



An example of a Medium KIT Exterior - Gable Roof Option



An example of a Medium KIT Interior - Gable Roof Option



An example of a Medium KIT Exterior - Skillion Roof Option



An example of a Medium KIT Interior - Skillion Roof Option

LARGE KIT (101m²)

SPA LARGE KIT by Structural Panels Australia and Little Things is a well designed building perfectly suited as a 2 + bedroom home for a couple or a family.

It is of course also very suited for an extra Office, Studio, Teenage space or Guestroom in the backyard or on a spare block.

It maybe built on either stumps or concrete slab and can be assembled in 2-3 days by a team of 3 people.

Area: 101m²

Extenal Dimensions: 9m x 11.5m²

Roof Profile Options: Gable or Skillion

LARGE - BASE PRICE (excluding design services, internal layout and finishes)		
Large (Walls + Roof)	Large (Optional Floor)	TOTAL (Walls + Roof + Floor)
\$48,800.68	\$25,038.59	\$73,839.27

Structural Engineering Certification	\$2,750.00 approx
Performance Solutions Certification	\$2,269.00 approx
Art Windows - Windows + Doors (uPVC double glazed)	\$18,953.00 approx
Mega Anchor- Advanced Footing System	\$7,521.00 approx
Price information only and is not supplied as part of SPA KIT	





An example of the Large KIT - Internal Layout
 Not to scale



An example of the Large KIT Exterior - Gable Roof Option



An example of the Large KIT Interior - Gable Roof Option



An example of the Large KIT Exterior - Skillion Roof Option



An example of the Large KIT Interior - Skillion Roof Option

What is in a SPA Kit?

Floor Panels 165mm SPA SIPs R-Value 4.53

12mm Oriented Strand Board / 143mm SL EPS Rigid Foam Core/ 12mm Oriented Strand Board

Wall Panels 115mm SPA SIPs R Value 3.26

12mm Oriented Strand Board / 93mm SL EPS Rigid Foam Core/ 12mm Oriented Strand Board.

Roof Panels 200mm Tridek SIPs Pro Series R Value 4.3

COLORBOND Roof Sheeting / 200mm EPS / COLORBOND Roof Sheeting.

Kit Inclusions

Box Splines for Floor and Wall SIPs	143mmx90mm & 93mmx90mm
Bottom Plate	90 x 45 MGP10
Top Plate	2 x 90 x 45 MGP10
Lintels	SPA SIPs Box Beams
Corner Studs	90 x 45 MGP10
Gable Version Ridge Beam	2 x 240 x 45 LVL
Door and Window opening fixing timbers	90 x 45 MGP10
SIPs screws for floor SIPs and wall corners, Expandable foam, Foam applicator & Applicator cleaner	
Timber roof structural screws, Stitching screws, Rivets, Roof infill strips	
Optional : Proctor Wraptite SA Building Wrap Internal 95mm SPA SIPs Walls for added acoustic and thermal performance	

Please note included Kit price lists includes accessories and GST but excluding freight charges. Freight charges vary with the site location and fuel price at the time of the delivery. Please enquire SPA Office at the time order for an accurate freight charges.

Kit Exclusions:

Footing system, decks and steps, building wrap, windows and doors, flashings, cladding, internal lining, internal partition walls, internal fixtures, finishes, joinery, flyscreens etc.

Little Things design stages and fee

The fee for our services will be **\$11250** (Stage 01 - 04 inclusive).

Design Fee Exclusions:

Depending on the project and your local Council requirements, there may be additional fees associated with Town Planning Building Permit applications and/or additional consultants required (ie building and land surveyor). Talk to us and we can help guide you on what may be expected for your specific project and site.

STAGE	DETAILS	OUTPUT
Stage 01	Meeting 01: Brief and Site Analysis	<ul style="list-style-type: none"> > Project brief (types and sizes of spaces, intention of look and feel) > Site Analysis > Advice on additional consultants if required.
Stage 02	Meeting 02: Concept Design	<ul style="list-style-type: none"> > 2 x Concept Options for review and discussion. > 1 x round of alterations > All further changes at hourly rates (\$100 per hour)
Stage 03	Meeting 03: Final Layout Design	<ul style="list-style-type: none"> > Final layout and external finishes finalised. > Prepare Town Planning drawings and submit to Council
Stage 04	Meeting 04: Finishes and Final Details	<ul style="list-style-type: none"> > Finalise internal finishes. > Prepare Construction drawings > Assist with submission for Building Permit

